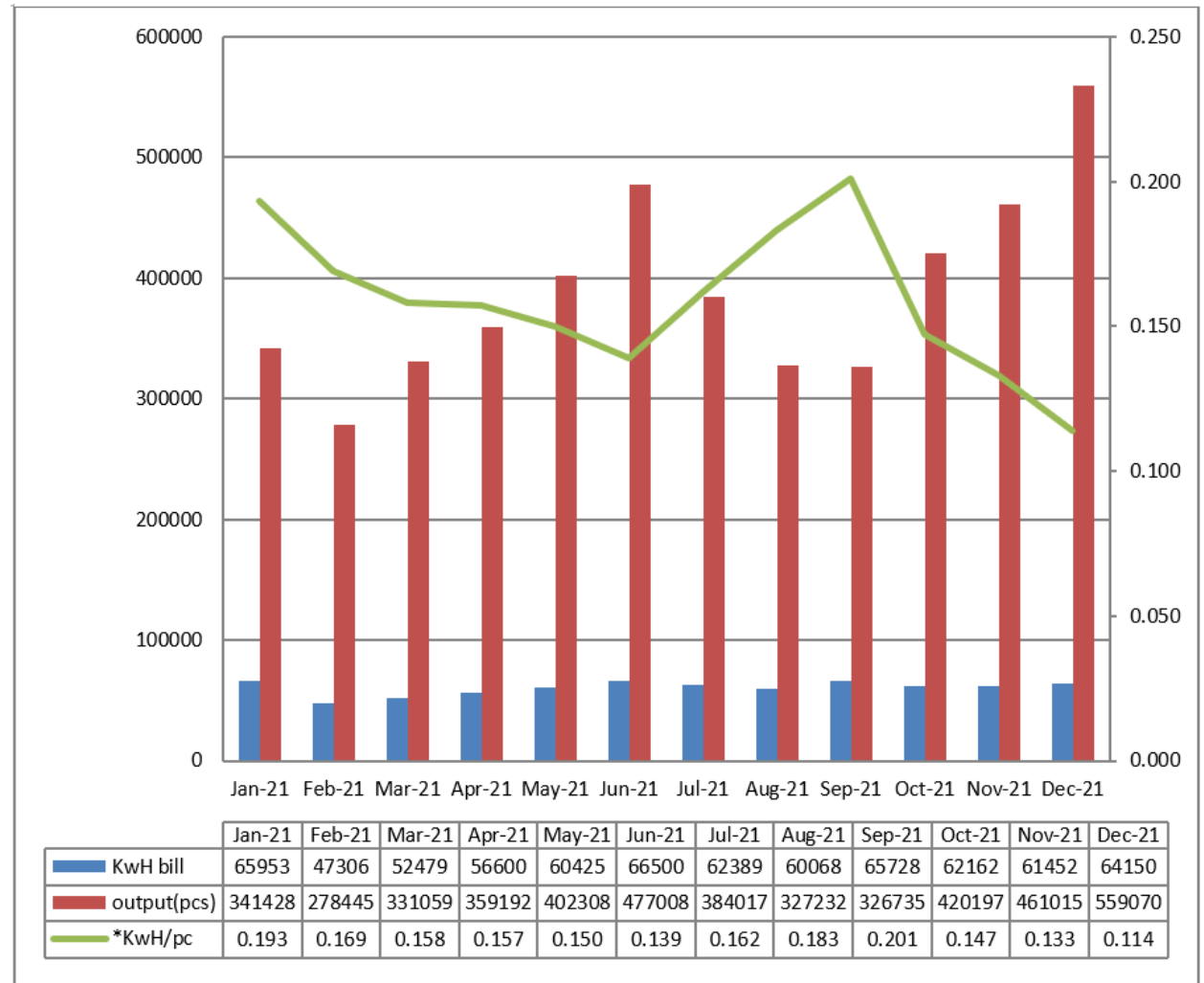


**FYNO Precision Pte Ltd**  
**Electricity vs Output 2021**

mmm-yy	KwH bill	output(pcs)	*KwH/pc	%
Jan-21	65953	341428	0.193	0.00%
Feb-21	47306	278445	0.169	-14.20%
Mar-21	52479	331059	0.158	-6.96%
Apr-21	56600	359192	0.157	-0.64%
May-21	60425	402308	0.150	-4.67%
Jun-21	66500	477008	0.139	-7.91%
Jul-21	62389	384017	0.162	14.20%
Aug-21	60068	327232	0.183	11.48%
Sep-21	65728	326735	0.201	8.96%
Oct-21	62162	420197	0.147	-36.73%
Nov-21	61452	461015	0.133	-10.53%
Dec-21	64150	559070	0.114	-16.67%
Total	725212	4667706	16%	-5.79%



*\*KwH/pc use may be different from the type of machine and complexity of the design of the part*